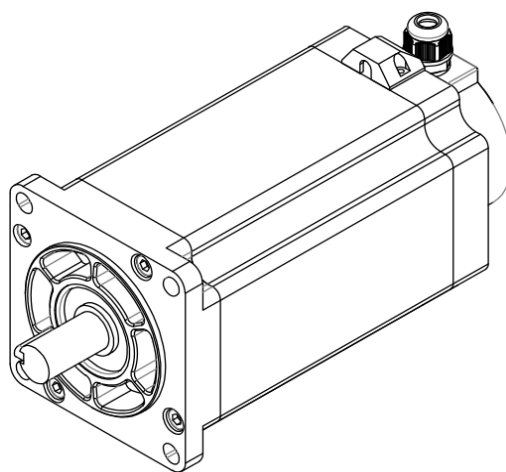
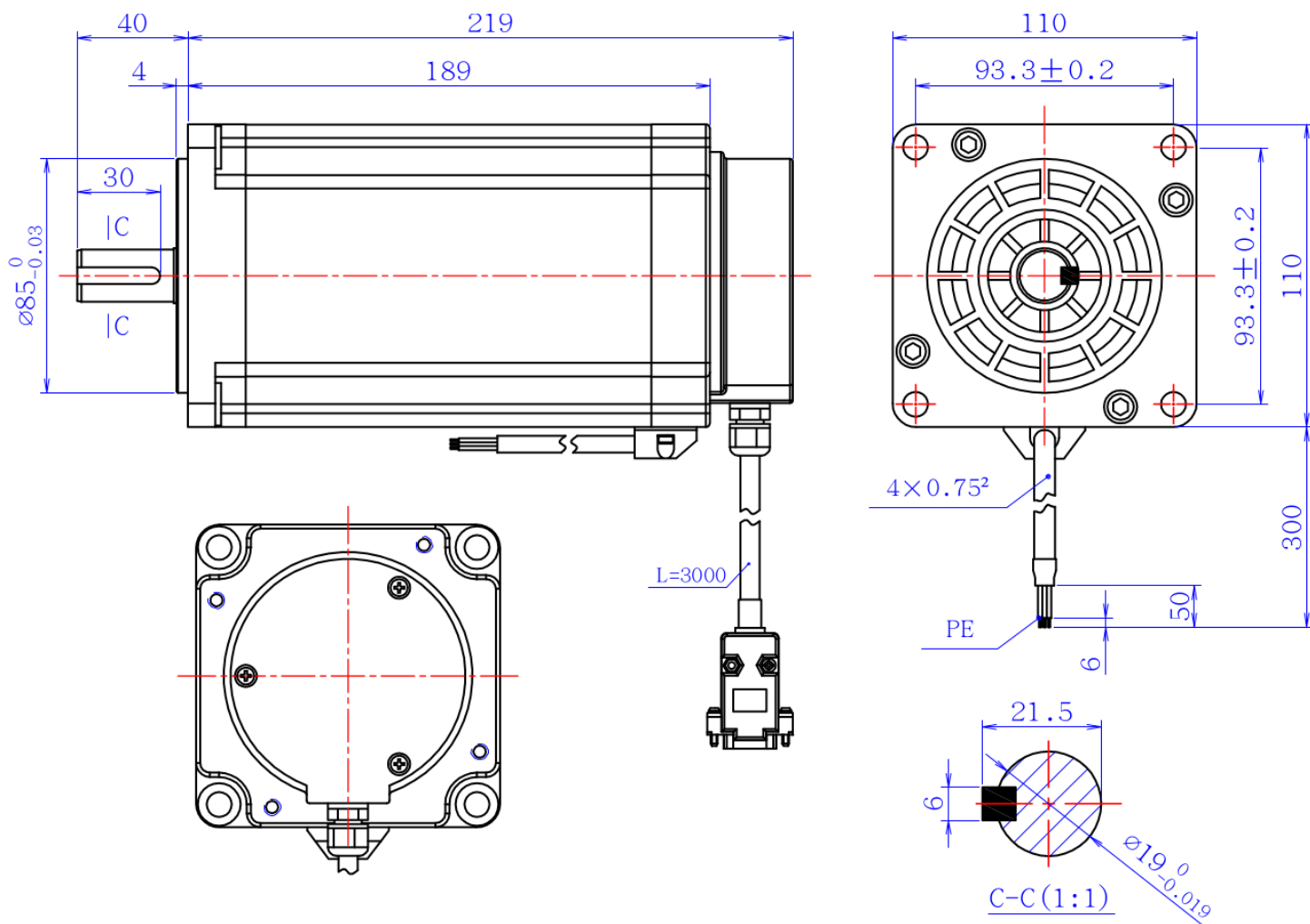


110F189-6903-EC1000

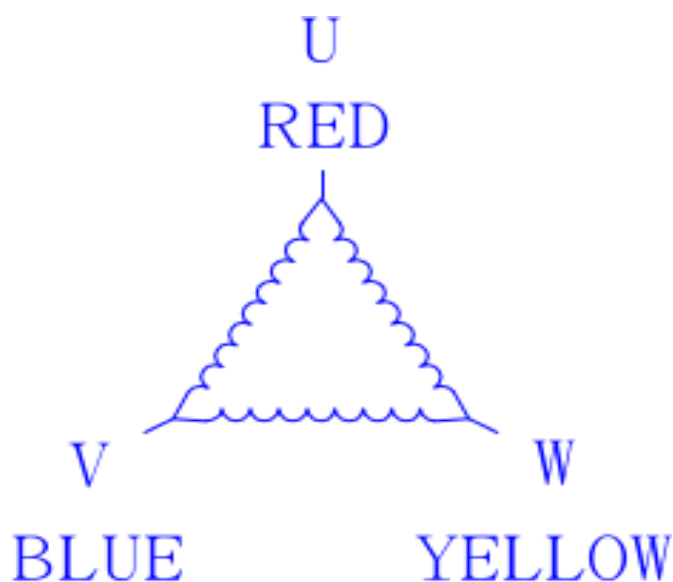


| <i>kąt</i> | <i>prąd</i> | <i>oporność</i> | <i>indukcyjność</i> | <i>inercja rotora</i> | <i>moment trzymania</i> |
|---------------|-------------|-----------------|---------------------|-----------------------|-------------------------|
| DEG | A | Ω | mH | kg/cm ² | N.m |
| $1.2 \pm 5\%$ | 6.9 | 0.59 | 7.9 | 17.4 | 20 |

Opis Wyprowadzeń:

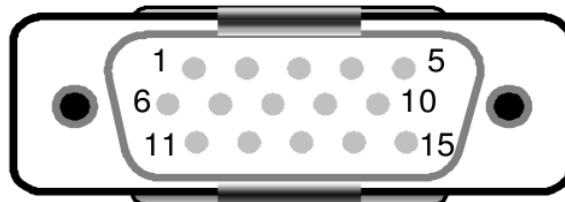
SILNIK

U RED czerwony
W YELLOW żółty
V BLUE niebieski



ENCODER:

- [2] Vcc +5V 100mA max
- [3] GND Signal and power ground - masa sygnałowa i zasilania
- [13] A- Encoder output
- [1] A+ Encoder output
- [12] B- Encoder output
- [11] B+ Encoder output



dystrybucja:

MARK

*ul. Kościuszki 52
05-800 Pruszków*

markcomp77@markcnc.pl
<http://markcnc.pl>

tel/fax +48-22-728-67-96
tel +48-602-346-070