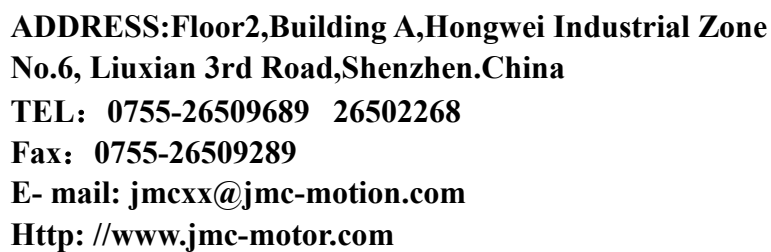




Stepper Motor (Close & Open)



Preface

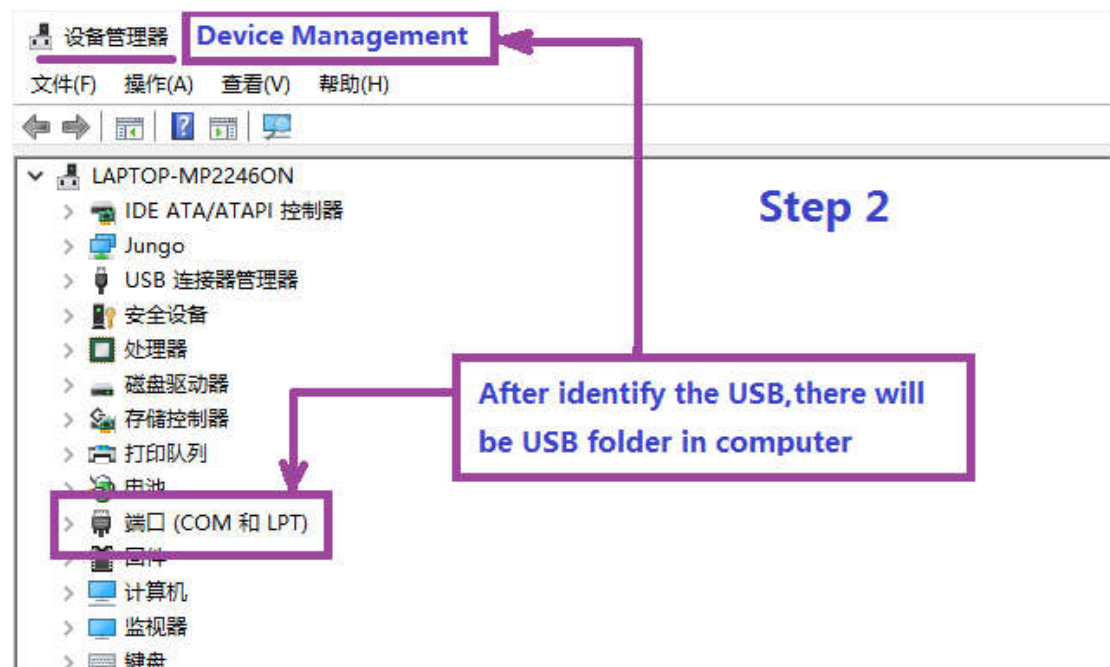
All contents of this manual, copyright owned by Shenzhen Just Motion Control Electromechanics Co.,Ltd., shall not be arbitrarily reproduced, copied, transcribed without permission. This manual does not contain any forms of guarantee, standpoint statement, or hint. Shenzhen Just Motion Control and its employees will not take any responsibility for the loss caused by direct or indirect leaking information mentioned in this Manual. In addition, products information in this manual is for reference only, we are sorry for not offering update if it is improved.

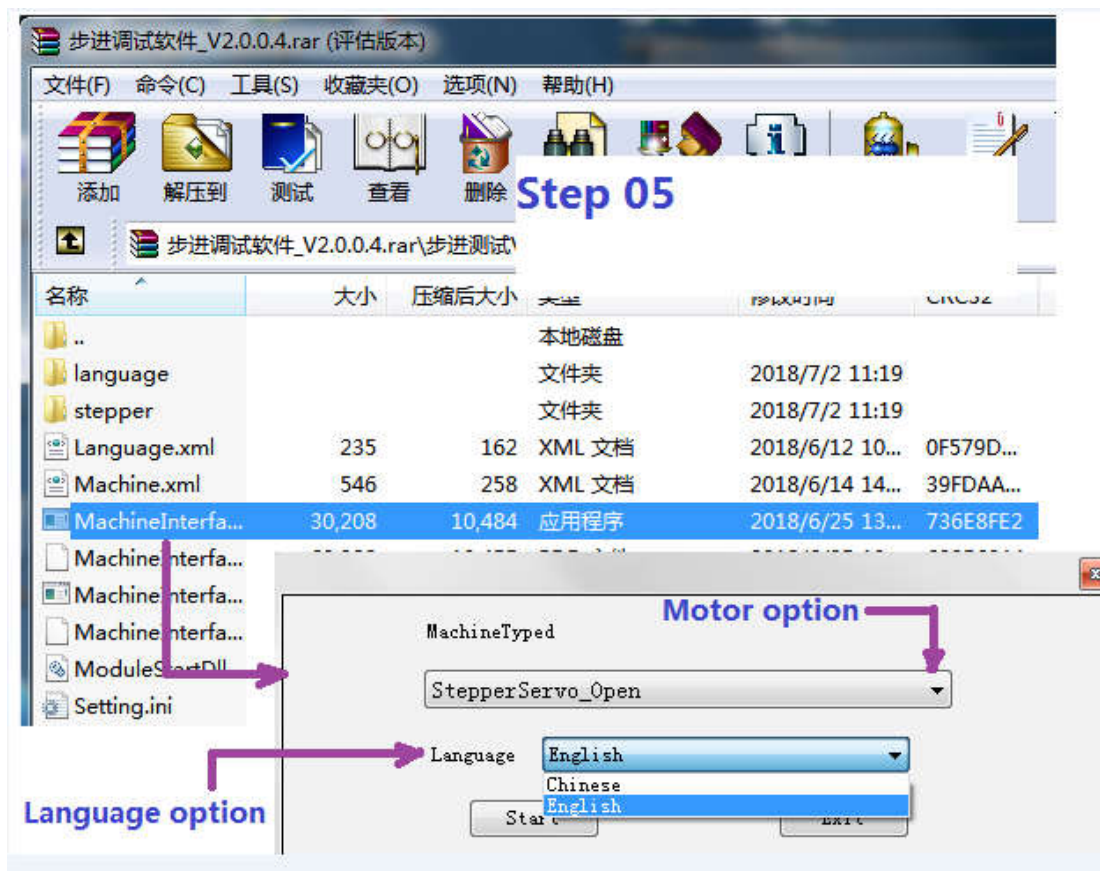
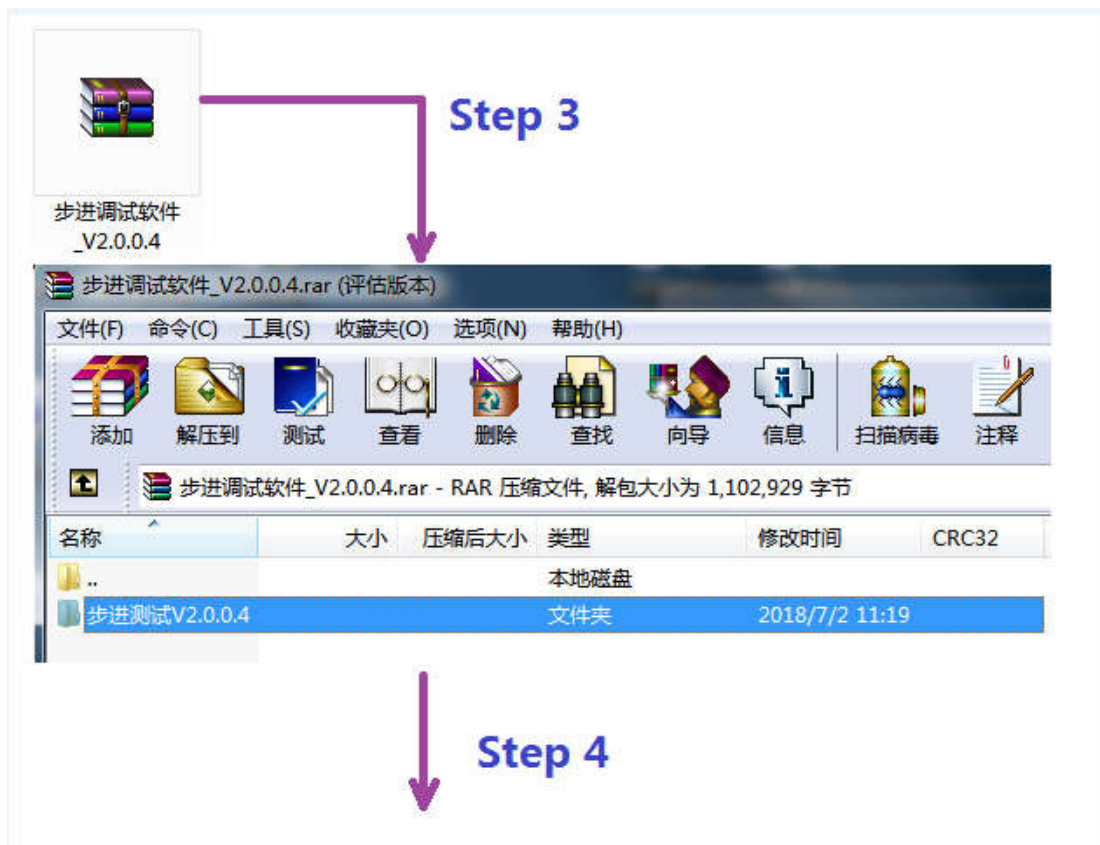
All Copyright Reserved.

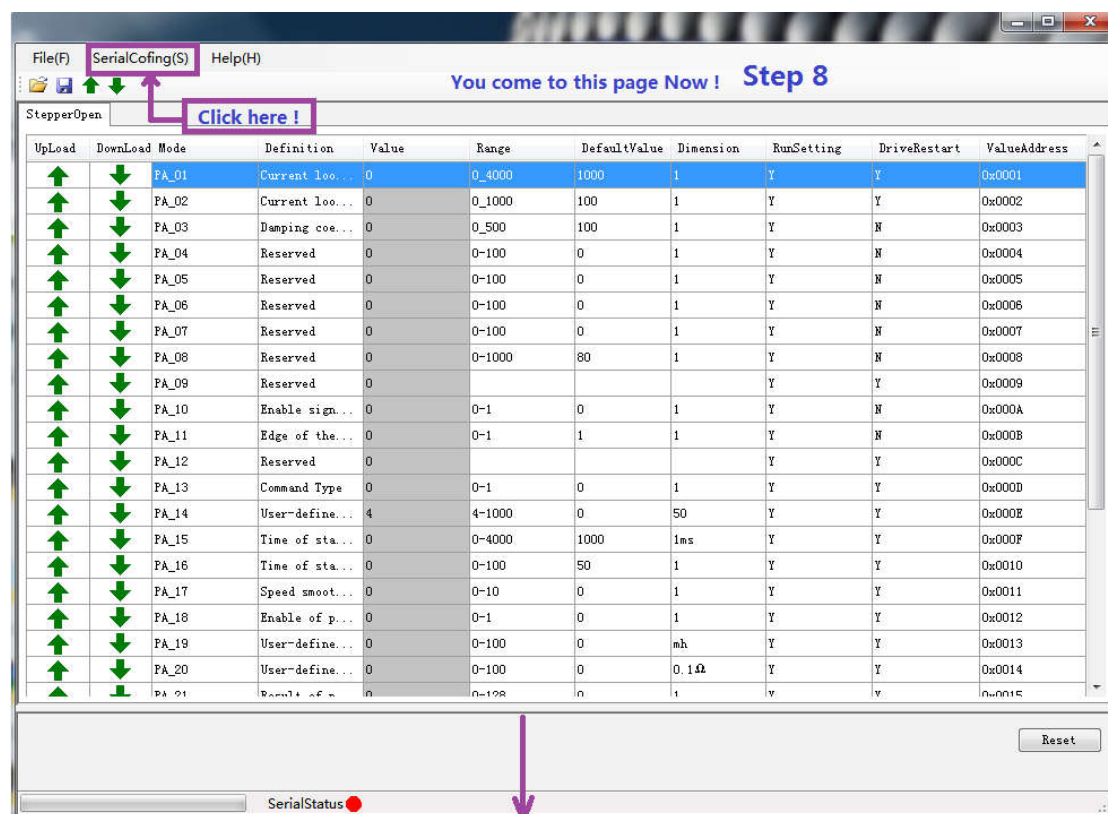
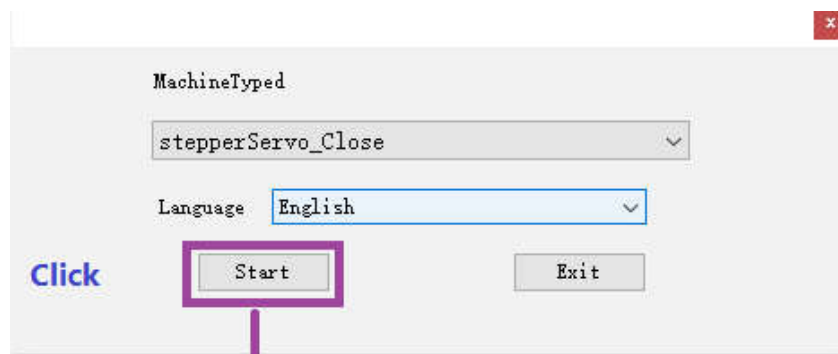
Shenzhen Just Motion Control Electromechanics Co.,Ltd.

Version	Edited By	Proofread By
V 01	Engineer Dept.	Engineer Dept.

Operation Procedure







Step 09

File(F) SerialConfig(S) Help(H)

SetpperClose

UpLoad	DownLoad	Mode	Value	Range	DefaultValue	Dimension	RunSetting	DriveRestart	ValueAddress
↑	↓	PA_01	0	0-4000	Reserved	Reserved	Y	Reserved	0x0001
↑	↓	PA_02	0	0-4000	Reserved	Reserved	Y	Reserved	0x0002
↑	↓	PA_03	0	0-4000	Reserved	Reserved	Y	Reserved	0x0003
↑	↓	PA_04	0	0-4000	Reserved	Reserved	Y	Reserved	0x0004
↑	↓	PA_05	0	0-4000	Reserved	Reserved	Y	Reserved	0x0005
↑	↓	PA_06	0	0-4000	Reserved	Reserved	Y	Reserved	0x0006
↑	↓	PA_07	SerialConfig					Reserved	0x0007
↑	↓	PA_08						Reserved	0x0008
↑	↓	PA_09						Reserved	0x0009
↑	↓	PA_10						Reserved	0x000A
↑	↓	PA_11						Reserved	0x000B
↑	↓	PA_12						Reserved	0x000C
↑	↓	PA_13						Reserved	0x000D
↑	↓	PA_14						Reserved	0x000E
↑	↓	PA_15	0	0-4000	Reserved	Reserved	Y	Reserved	0x000F
↑	↓	PA_16	0	0-4000	Reserved	Reserved	Y	Reserved	0x0010
↑	↓	PA_17	0	0-4000	Reserved	Reserved	Y	Reserved	0x0011
↑	↓	PA_18	0	0-4000	Reserved	Reserved	Y	Reserved	0x0012
↑	↓	PA_19	0	4-4000	Reserved	Reserved	Y	Reserved	0x0013
↑	↓	PA_20	0	0-4000	Reserved	Reserved	Y	Reserved	0x0014
↑	↓	PA_21	0	0-4000	Reserved	Reserved	Y	Reserved	0x0015

SerialConfig

Point: COM10 DataBits: 8 StopBits: None

BaudRate: 57600 Parity: None MachineAddr: 1

Just click OK → OK Cancel

SerialStatus: ● → Red dot changes to Green

SerialStatus: ●

Reset

Step 10

File(F) SerialConfig(S) Help(H)

SetpperClose

UpLoad	DownLoad	Mode	Value	Range	DefaultValue	Dimension	RunSetting	DriveRestart	ValueAddress
↑	↓				Reserved	Reserved	Y	Reserved	0x0001
↑	↓				Reserved	Reserved	Y	Reserved	0x0002
↑	↓				Reserved	Reserved	Y	Reserved	0x0003
↑	↓	PA_04	10	0-4000	Reserved	Reserved	Y	Reserved	0x0004
↑	↓	PA_05	0	0-4000	Reserved	Reserved	Y	Reserved	0x0005
↑	↓	PA_06	0	0-4000	Reserved	Reserved	Y	Reserved	0x0006
↑	↓	PA_07	0	0-4000	Reserved	Reserved	Y	Reserved	0x0007
↑	↓	PA_08	8	0-4000	Reserved	Reserved	Y	Reserved	0x0008
↑	↓	PA_09	10	0-4000	Reserved	Reserved	Y	Reserved	0x0009
↑	↓	PA_10	0	0-4000	Reserved	Reserved	Y	Reserved	0x000A
↑	↓	PA_11	1	0-4000	Reserved	Reserved	Y	Reserved	0x000B
↑	↓	PA_12	4	0-4000	Reserved	Reserved	Y	Reserved	0x000C
↑	↓	PA_13	1	0-4000	Reserved	Reserved	Y	Reserved	0x000D
↑	↓	PA_14	0	0-4000	Reserved	Reserved	Y	Reserved	0x000E
↑	↓	PA_15	1000	0-4000	Reserved	Reserved	Y	Reserved	0x000F
↑	↓	PA_16	500	0-4000	Reserved	Reserved	Y	Reserved	0x0010
↑	↓	PA_17	5	0-4000	Reserved	Reserved	Y	Reserved	0x0011
↑	↓	PA_18	0	0-4000	Reserved	Reserved	Y	Reserved	0x0012
↑	↓	PA_19	0	4-4000	Reserved	Reserved	Y	Reserved	0x0013
↑	↓	PA_20	0	0-4000	Reserved	Reserved	Y	Reserved	0x0014
↑	↓	PA_21	0	0-4000	Reserved	Reserved	Y	Reserved	0x0015

Click here to upload datas from driver → UpLoad button

Parameter already read! → OK

SerialStatus: ●

Reset

↑	↓	PA_04	0	0~4000	Reserved	Reserved	Y	Reserved	0x0004
↑	↓	PA_05	0	0~4000	Reserved	Reserved	Y	Reserved	0x0005
↑	↓	PA_06	0	0~4000	Reserved	Reserved	Y	Reserved	0x0006
↑	↓	PA_07	0	0~4000	Reserved	Reserved	Y	Reserved	0x0007
↑	↓	PA_08	0	0~4000	Reserved	Reserved	Y	Reserved	0x0008
↑	↓	PA_09	0	0~4000	Reserved	Reserved	Y	Reserved	0x0009
↑	↓	PA_10	0	0~4000	Reserved	Reserved	Y	Reserved	0x000A
↑	↓	PA_11	1	0~4000	Reserved	Reserved	Y	Reserved	0x000B
↑	↓	PA_12	4	0~4000	Reserved	Reserved	Y	Reserved	0x000C
↑	↓	PA_13	1	0~4000	Reserved	Reserved	Y	Reserved	0x000D
↑	↓	PA_14	0	0~4000	Reserved	Reserved	Y	Reserved	0x000E

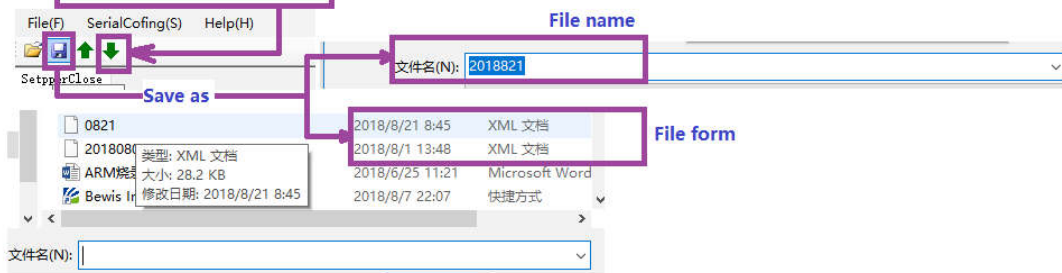
Fix the data you want to change, then click down arrow.

Step 11



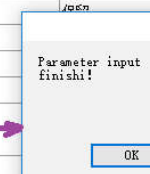
If you want to download all datas, then click Arrow here

Step 12



Upload	Download	序号	设定	设定范围	默认参数	量纲	设定方式	重启驱动	通讯地址
↑	↓	PA_01	1000	0~4000	保留	保留	运行设定	保留	0x0001
↑	↓	PA_02	50	0~4000	保留	保留	运行设定	保留	0x0002
↑	↓	PA_03	0	0~4000	保留	保留	运行设定	保留	0x0003
↑	↓	PA_04	0	0~4000	保留	保留	运行设定	保留	0x0004
↑	↓	PA_05	0	0~4000	保留	保留	运行设定	保留	0x0005
↑	↓	PA_06	0	0~4000	保留	保留	运行设定	保留	0x0006
↑	↓	PA_07	0	0~4000	保留	保留	运行设定	保留	0x0007
↑	↓	PA_08	4	0~4000	保留	保留	运行设定	保留	0x0008
↑	↓	PA_09	0	0~4000	保留	保留	运行设定	保留	0x0009
↑	↓	PA_10	0	0~4000	保留	保留	运行设定	保留	0x000A
↑	↓	PA_11	1	0~4000	保留	保留	运行设定	保留	0x000B
↑	↓	PA_12	72	0~4000	保留	保留	运行设定	保留	0x000C
↑	↓	PA_13	1	0~4000	保留	保留	运行设定	保留	0x000D
↑	↓	PA_14	4	0~4000	保留	保留	运行设定	保留	0x000E
↑	↓	PA_15	100	0~4000	保留	保留	运行设定	保留	0x000F
↑	↓	PA_16	50	0~4000	保留	保留	运行设定	保留	0x0010
↑	↓	PA_17	5	0~4000	保留	保留	运行设定	保留	0x0011
↑	↓	PA_18	0	0~4000	保留	保留	运行设定	保留	0x0012
↑	↓	PA_19	0	0~4000	保留	保留	运行设定	保留	0x0013
↑	↓	PA_20	0	0~4000	保留	保留	运行设定	保留	0x0014
↑	↓	PA_21	0	0~4000	保留	保留	运行设定	保留	0x0015

If you want another motor driver has the same data, then exchange to another one, open the file just be saved, click Up Arrow



保留	保留	运行设定	保留	0x0007
保留	保留	运行设定	保留	0x0008
保留	保留	运行设定	保留	0x0009
保留	保留	运行设定	保留	0x000A
保留	保留	运行设定	保留	0x000B
保留	保留	运行设定	保留	0x000C
保留	保留	运行设定	保留	0x000D
保留	保留	运行设定	保留	0x000E
保留	保留	运行设定	保留	0x000F
保留	保留	运行设定	保留	0x0010
保留	保留	运行设定	保留	0x0011
保留	保留	运行设定	保留	0x0012
保留	保留	运行设定	保留	0x0013
保留	保留	运行设定	保留	0x0014
保留	保留	运行设定	保留	0x0015

Parameter already reset!

OK

Just click Reset, all datas will back to Default !

Reset